

**“HEARD**

**RUNNYMED**

REPRESENTING  
**‘RACE’**  
&  
**MIGRATION**

**‘HEARD**

**RUNNYMEDE**

## REPRESENTING 'RACE' & MIGRATION

<b>ABOUT THIS RESOURCE</b>	<b>4</b>
<b>INTERSECTIONALITY: WHAT DOES IT MEAN?</b>	<b>10</b>
<b>SO HOW DO 'RACE' AND MIGRATION INTERSECT?</b>	<b>14</b>
<b>HOW DID WE GET HERE? (THE FACTUAL BITS)</b>	<b>18</b>
20TH CENTURY	20
HOSTILE ENVIRONMENT	21
WINDRUSH SCANDAL	22
<b>SO HOW CAN WE EFFECTIVELY REPRESENT THE INTERSECTION OF 'RACE' AND MIGRATION?</b>	<b>24</b>
'RACE' AND MIGRATION FRAMING GUIDELINES	26
<b>WHAT OUR MEDIA MOVERS SAY</b>	<b>30</b>
<b>ABOUT US</b>	<b>34</b>



# WHAT IS THIS RESOURCE?

**HEARD AND THE RUNNYMEDE  
TRUST HAVE TEAMED UP TO  
CREATE THIS INTERACTIVE TOOLKIT,  
PROVIDING YOU WITH THE TOOLS  
AND CONFIDENCE THAT YOU NEED TO  
TELL POWERFUL AND NUANCED  
STORIES ABOUT  
'RACE' AND MIGRATION.**

\*'Race' is a social construct used to group people based on perceived (rather than biological) differences or shared ancestry. Though the meaning of 'race' is fluid and changes across time and context, its impact through racism is real and harmful.

Attempts to systemise racial divisions and hierarchies have been, and continue to be, used to justify racist policies, practices and cultures, exploitation, enslavement and genocide.



# WHY IS IT USEFUL?

**In this resource we will explore what intersectionality means and take an in-depth look at the intersection of 'race' and migration, challenging common misconceptions and normalising inclusive terminology.**

**We want to inspire creativity around ways in which this intersection can be accurately, authentically and explicitly represented on our screens.**





**WHO IS THIS  
RESOURCE FOR?**

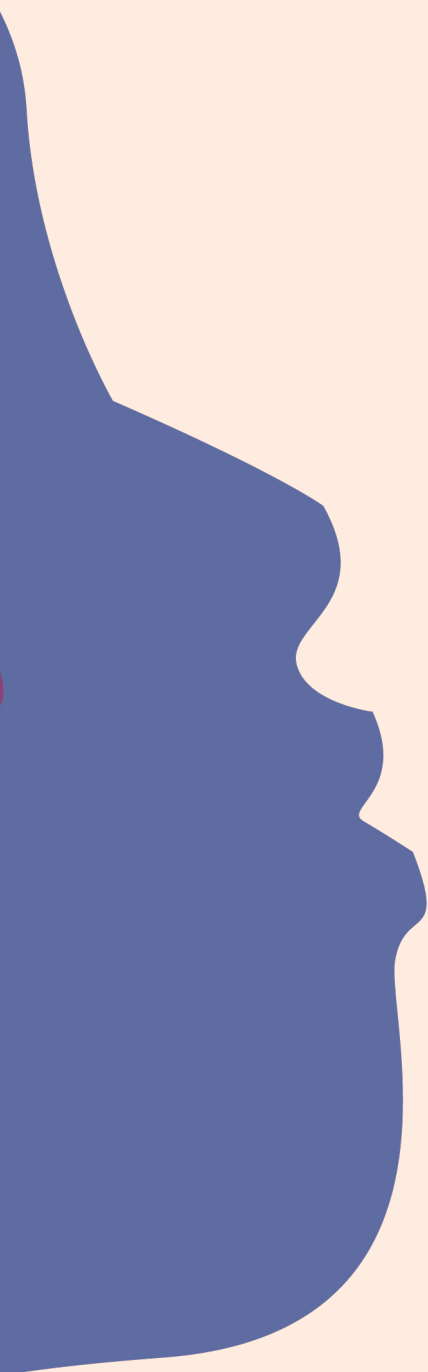
**This resource has been created for media professionals, influencers, PR people, content creators and anyone working in the popular culture space.**

**We'd also invite anti-racist organisations to use this resource to build on their work.**

**The resource has been created so that it's quick and easy to digest - while being accessible for everyone.**

**For those who want to deepen their learning further - we've provided links to further reading and resources throughout.**

**We hope you enjoy it.**





**INTER  
SECTION  
ALITY**

WE USE THE TERM  
**INTERSECTIONALITY**



TO ACKNOWLEDGE EVERYONE'S  
UNIQUE EXPERIENCES OF



DISCRIMINATION  
& OPPRESSION.

## (WHAT DOES IT MEAN?)

**Intersectionality** refers to overlapping and interdependent identities, social categorisations and systems of oppression like 'race', class, gender, sexuality and migration status.

By looking at the world through this lens, we can better understand and challenge the ways in which different forms of oppression impact different people.

*Intersectionality is best described by the works of the Combahee River Collective and Sins Invalid.*

*Intersectionality is the recognition that everyone is made up of a multitude of identities. It is also the understanding that 'each identity can be a site of privilege or oppression.'*

*When these identities intersect in a variety of ways, this 'creates the conditions of our lives.'*

**Here's Jumoke Abdullahi.**

"I'm co-founder of The Triple Cripples and Our Living Archives, and a professional baby girl".



SO HOW DO  
'RACE' &  
MIGRATION



INTERSECT?

**'RACE' AND MIGRATION**  
**INTERSECT IN VARIOUS WAYS,**  
**OFTEN LEADING TO RACIALISED,**  
**DISCRIMINATORY IMPACTS.**



Here are a few examples of where we see it showing up:

**95%**

**OF PEOPLE HELD IN IMMIGRATION DETENTION  
ARE PEOPLE OF COLOUR.**

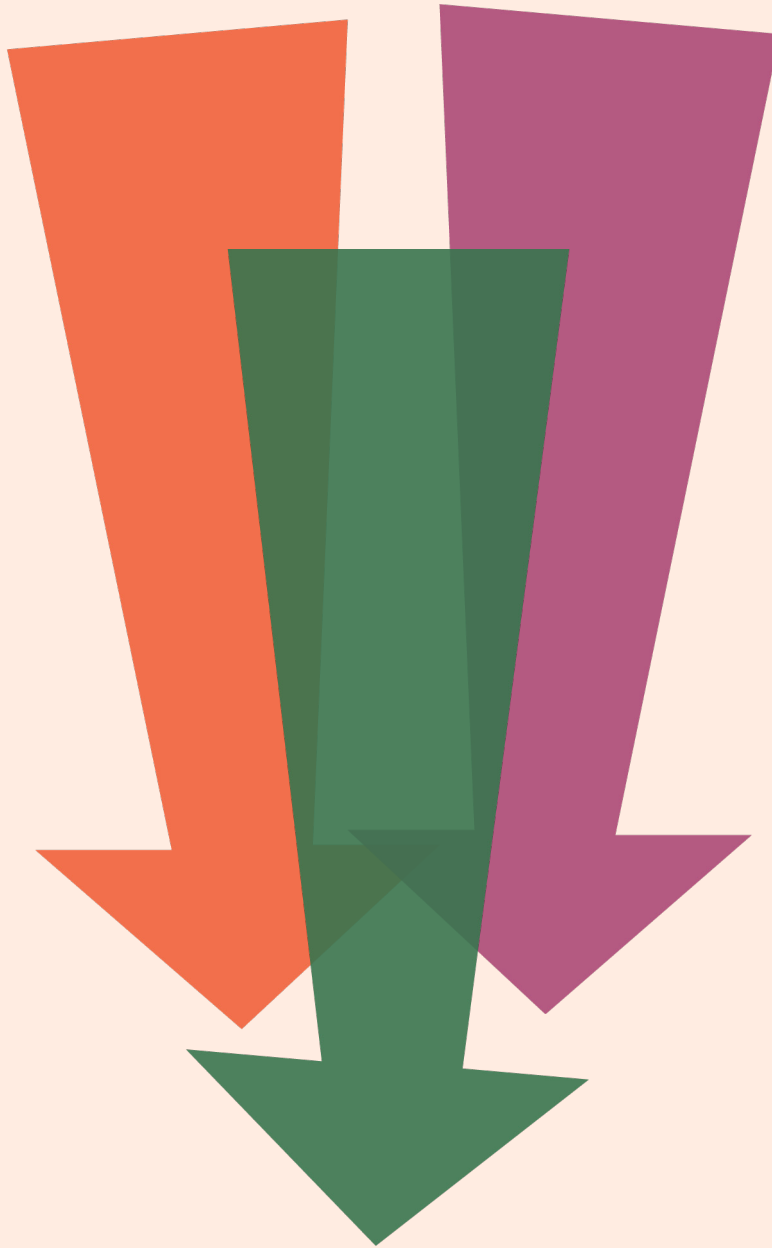
**PEOPLE OF COLOUR ARE DISPROPORTIONATELY  
TARGETED BY LAWS TO STRIP PEOPLE OF  
BRITISH CITIZENSHIP.**

**PEOPLE FROM NON-WHITE NATIONS  
ARE DISPROPORTIONATELY AFFECTED BY  
A LACK OF SAFE ROUTES INTO  
THE UK TO SEEK SAFETY.**

**LANDLORDS ARE ENCOURAGED TO USE  
THEIR OWN, SOMETIMES PREJUDICED,  
IDEAS OF WHO 'BELONGS' IN THE UK.**

**PEOPLE OF COLOUR ARE  
DISPROPORTIONATELY IMPACTED BY  
RIGHT TO RENT IMMIGRATION CHECKS  
THAT REQUIRE PRIVATE LANDLORDS  
TO CHECK TENANTS' RIGHT TO LIVE IN  
THE UK.**

# HOW DID WE GET



**HERE?**

**(THE FACTUAL BITS)**

**HUMANS HAVE ALWAYS MOVED.**

**BUT OVER TIME,  
IMMIGRATION POLICIES HAVE  
MADE IT MORE CHALLENGING  
FOR PEOPLE TO MOVE FREELY.**

Here are some examples of what this has looked like in recent years, and the ways it's disproportionately impacted people of colour:

## 20TH CENTURY

People arrived to the UK after WWII from nations in the Caribbean, Africa and Asia with a history of British colonial rule. They arrived as citizens of the United Kingdom and many were children who came on their parents' passports.

In the post-war period, the UK government developed and updated immigration laws and policies to restrict migration of people of colour from nations with a history of British colonial rule, discriminating on the basis of colour and origin and stripping many of them of their citizenship.

# HOSTILE ENVIRONMENT

(2012)

The Hostile Environment is a series of immigration laws, policies, rules and regulations designed to make living in the UK difficult for people who can't provide the right documentation 'proving' their right to live here.

Based on ideas about who does and does not 'belong' in Britain, these policies disproportionately target and harm communities of colour.

# WINDRUSH SCANDAL

Hostile immigration policies contributed to the Windrush Scandal. The UK government wrongfully detained and deported hundreds of Commonwealth citizens, mostly Black people, who were invited to the UK from the Caribbean after WWII with full citizenship rights. As they were never provided with documentation proving their right to live in the UK, new Hostile Environment requirements meant that authorities assumed they were living here unlawfully.

Those targeted were stripped of their basic rights. Many lost their jobs and benefits, were denied access to housing, healthcare and essential public services such as bank accounts and medical services. Some people were deported, despite living legally in the UK for over fifty years.

This story is told through  
the BBC Drama  
*Sitting in Limbo.*

**HERE**



**SO HOW CAN WE  
EFFECTIVELY  
REPRESENT THE  
INTERSECTION OF**



**'RACE' &  
MIGRATION?**

**'RACE'** AND **MIGRATION** ARE  
RARELY EXPLICITLY LINKED.

BUT **RACISM** IS CENTRAL TO  
DISCUSSIONS ABOUT **MIGRATION**,  
WHERE CERTAIN  
MIGRANTS ARE TREATED  
AS **OUTSIDERS**.

Here are some guidelines on ways that we can (and should) be using language to effectively communicate about this issue in the content that we create - and ways to explicitly reference the relationship between 'race' and migration:

**Highlight that basic rights and dignity are unconditional. The right to move is a human right, not a privilege.**

This is undermined by the "good immigrant" trope that suggests that only those who are perceived as exceptionally accomplished or hardworking deserve compassion and acceptance.

## **HOW WE CAN ACTION THIS**

Emphasise that migration is a natural human event, incorporating stories of migration from different places and during different time periods.

**Emphasise that migrants' rights are core to progressing racial justice.**

Whilst hostile immigration policies and practices disproportionately harm people of colour, we are not progressing.

This is being illustrated through inhumane detention conditions, forced deportations, and lack of access to basic services.

## **HOW WE CAN ACTION THIS**

It's important that we use imagery, stories and statistics to highlight the disproportionate impact that immigration restrictions have on communities of colour.

**Show that the UK's immigration and asylum system isn't broken, it's racist by design and governments have made choices that disproportionately impact people of colour.**

## **HOW WE CAN ACTION THIS**

Create content that emphasises that this is a systemic issue. Point the finger at our borders and immigration system as this issue, rather than the people migrating.

**Ensure people with lived experience are empowered to guide and inform content, and tell their own stories.**

## **HOW WE CAN ACTION THIS**

Commit to creating content that amplifies the voices of people with diverse experiences of migration, and create safe spaces for them to share their stories.

**Accurately represent people seeking asylum, migrant groups and refugees as an integral part of British society, showing that Britain's National identity is inherently multiracial and multicultural.**

## **HOW WE CAN ACTION THIS**

Situate characters with experience of migration (those who are exceptionally accomplished and those living ordinary lives) within British culture.


We need to show the faces, communities and stories of the real people that these discriminatory policies affect.

“

# WHAT OUR MEDIA MOVERS SAY

”

WE ASKED YOUNG PEOPLE WITH  
LIVED EXPERIENCE OF THIS  
INTERSECTION, WHAT IS MOST  
IMPORTANT TO THEM IN THE  
REPRESENTATION OF 'RACE' AND  
**MIGRATION** IN POPULAR CULTURE.





Here are some of their thoughts:



*In terms of 'race', it's great to see more people like me in the media. It helps to know that there is diverse representation.*

*It's important to see authentic stories from people with lived experience in popular culture.*

*It's important to consider safety / safeguarding of people with lived experience when doing this work.*

*Show factual stories of what immigrants go through rather than running with a stereotypical view of immigrants.*

*The most important thing to me is authenticity, diversity and empathy towards people of different 'race' and migration backgrounds. I want to see accurate and true-to-life portrayals of the different range of voices and stories.*

*It's important that we hear the real stories of people from migrant backgrounds who have experienced racism.*

*It's crucial to humanise individuals and show racial minorities and migrants as active members and contributors to society.*



**HEARD IS A CHARITY WORKING WITH PEOPLE AND THE MEDIA TO INSPIRE CONTENT AND COMMUNICATION THAT CHANGES HEARTS AND MINDS.**

**WE ALL KNOW THAT BEING HEARD MATTERS.**

**ON A FUNDAMENTAL LEVEL, GOOD COMMUNICATION MEANS BEING HEARD AND FEELING HEARD. AND GOOD COMMUNICATION IS TRANSFORMATIVE. IT CAN SHIFT PERSPECTIVES, AND MOVE CONVERSATIONS – AND SOCIETY – FORWARD.**

**THEREFORE, IN A WORLD THAT CAN FEEL LOUD, DIVIDED AND AWASH WITH MISUNDERSTANDING, OUR WORK IS MAKING SURE WE CAN HEAR EACH OTHER. IT'S ABOUT FINDING COMMON GROUND ON BIG, IMPORTANT ISSUES. CONNECTING PEOPLE. GROWING UNDERSTANDING.**

**CHECK OUT OUR CORE PROGRAMMES FOCUSED ON ISSUES SUCH AS CLIMATE CHANGE, POVERTY, DOMESTIC ABUSE, TRANSGENDER EXPERIENCES, MIGRATION AND CHILDREN'S PALLIATIVE CARE. OUR NAME ALSO REFLECTS HOW WE CENTRE AND SUPPORT PEOPLE WHOSE STORIES NEED TO BE HEARD AT SCALE.**

**SIGN UP TO OUR NEWSLETTER HERE [BIT.LY/HEARD-NEWS](https://bit.ly/heard-news)  
FOLLOW US ON LINKEDIN [HEARD](#)**

**THE RUNNYMEDE TRUST IS THE UK'S LEADING INDEPENDENT RACIAL JUSTICE THINK TANK.**

**FROM BROADENING THE CURRICULUM TO EXPOSING THE WINDRUSH SCANDAL, OUR WORK IS ROOTED IN CHALLENGING STRUCTURAL RACISM AND ITS IMPACT ON COMMUNITIES OF COLOUR.**

**OUR AUTHORITATIVE RESEARCH-BASED INTERVENTIONS EQUIP DECISION MAKERS, PRACTITIONERS AND CITIZENS WITH THE KNOWLEDGE AND TOOLS TO DELIVER GENUINE PROGRESS TOWARDS RACIAL JUSTICE IN BRITAIN.**

**PROUDLY INDEPENDENT, WE SPEAK TRUTH TO POWER ON RACE AND RACE WITHOUT FEAR OR FAVOUR. WE ARE NOT SWAYED BY POLITICAL AGENDA, PROFIT OR POPULAR OPINION.**

**WE ARE AUTHENTIC, LED BY AN ETHNICALLY DIVERSE TEAM WE DRAW FROM OUR LIVED EXPERIENCE AND THAT OF OUR WIDE AND INCLUSIVE COMMUNITY AND PARTNERSHIP NETWORKS.**

**‘HEARD**

**RUNNYMED**